



**Kent Sail Race**  
**North Star Sail Club**  
**Saturday, August 22, 2020**  
**SAILING INSTRUCTIONS**

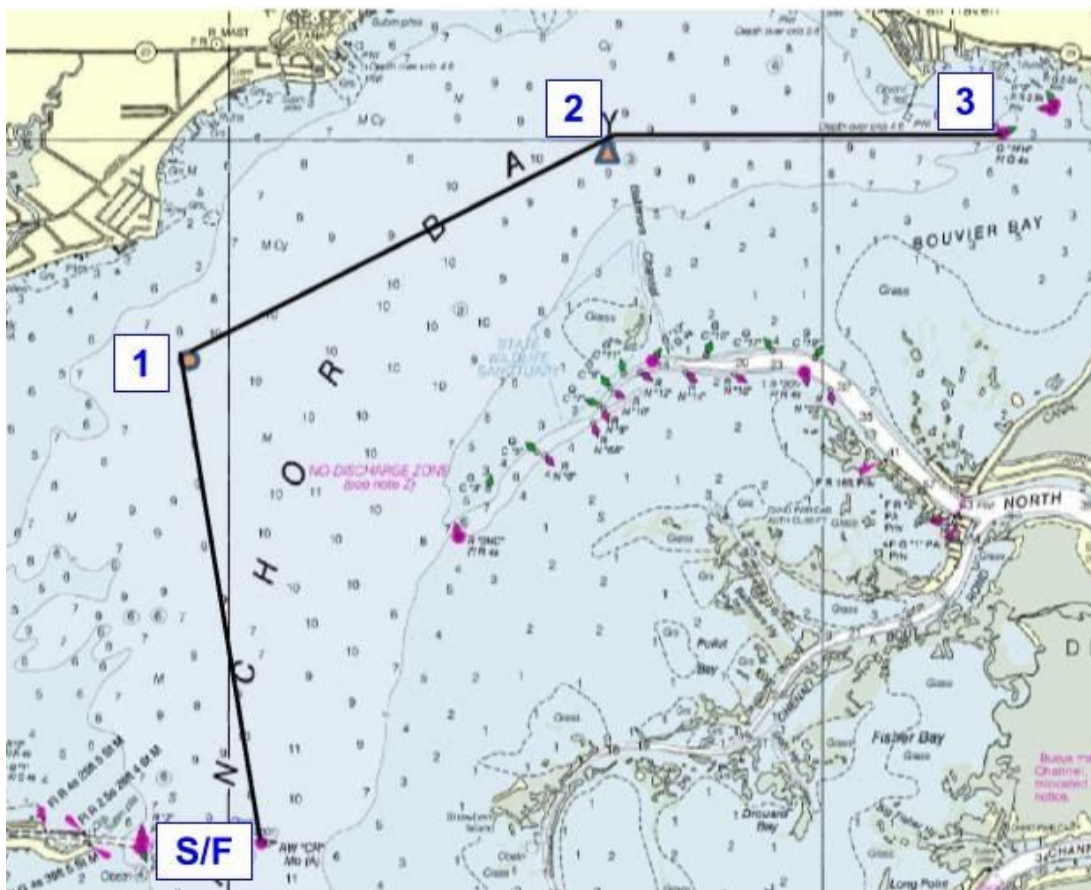


Special thanks to the Kent Sail Company for their generous support of this race.

1. **RULES** This race will be governed by the rules as defined in The Racing Rules of Sailing (RRS) and as modified by the 2020 Anchor Bay Yacht Racing Association (ABYRA) Handbook and its addenda, this race's Notice of Race, and these Sailing Instructions.
2. **NOTICES TO COMPETITORS** Notices to competitors will be posted on the official notice board located on YachtScoring.com. These notices may also be posted at the North Star Sail Club (NSSC) clubhouse, located in a free standing case to the west of the parking lot side of the clubhouse, but this is not required.
3. **CHANGES TO SAILING INSTRUCTIONS**
  - 3.1. Changes to the sailing instructions will be posted on the official notice board before 0900 on Saturday, August 22, except that any change to the schedule of the race will be posted by 2100 on Friday, August 21.
  - 3.2. Per RRS 90.2(c), when RC flies Code "L" flag, ("come within hail"), verbal changes may be given altering any part of these instructions.
4. **SIGNALS MADE ASHORE**
  - 4.1. Signals made ashore will be displayed at the NSSC flag pole.
  - 4.2. RRS Race Signals is changed as follows. When flag AP is displayed ashore, "1 minute" is replaced with "not less than 30 minutes" in the race signal AP.
5. **SCHEDULE** The warning signal for the first start is scheduled for 1100 on Saturday, August 22. It will be preceded by one minute by a sequence alert, which will consist of multiple sounds.
6. **CLASSES** Class splits, class flags, and order of start will be posted on the official notice board.
7. **RACING AREA** The racing area will be Anchor Bay, Lake St. Clair. The starting area will be at government buoy CR, east of the Clinton River channel.

8. COURSE

*Not For Navigation*



Start-1(stbd)-2(stbd)-3(port)-2(port)-1(port)-Finish

9. MARKS

Mark	Description	Approx. Position
Start/Finish	Government buoy CR	42° 35.64' N, 82° 44.72' W
1	ABYRA C	42° 38.64' N, 82° 45.31' W
2	Orange tetrahedron	42° 39.91' N, 82° 41.66' W
3	Government buoy 1FH	42° 40.06' N, 82° 38.49' W

10. **THE START**
  - 10.1. RRS 26 is unchanged.
  - 10.2. The starting line will be between a staff displaying an orange flag on the RC Signal Boat at the starboard end and government buoy CR at the port end.
11. **POSTPONEMENT OR ABANDONMENT BEFORE THE START**
  - 11.1. RRS Race Signals is unchanged.
  - 11.2. RRS 27.3 is unchanged.
12. **LIFE JACKETS** RRS 40 is changed as follows. With the prediction by NOAA or the presence of 20 knots of wind at the commencement of the start sequence, the race committee may conspicuously display within its rigging a personal flotation device (PFD) or the code flag Y. This does not mandate the use of PFDs, but instead suggests that the expected conditions warrant the use of PFDs by each race participant.
13. **INDIVIDUAL RECALL** RRS 29.1 is unchanged. Broadcast of recalled sail numbers on VHF Channel 72 may also be used, but is not required.
14. **GENERAL RECALL** RRS 29.2 is changed as follows. If the race committee signals a general recall (display flag First Substitute with two sounds), the recalled class shall restart after all other classes have started. Broadcast of the recall notice on VHF Channel 72 may also be used, but is not required.
15. **SHORTENING OR ABANDONMENT AFTER THE START** RRS 32 is unchanged.
16. **THE FINISH** The finishing line will be between a staff displaying an orange flag on a boat displaying an RC flag and government buoy CR.
17. **TIME LIMIT** The time limit for each class is four hours. If one boat in a class sails the course and finishes within the time limit, all boats in that class that finish within 30 minutes of the first boat's finish shall be scored according to their finishing places, unless the race is abandoned. Boats that finish 30 minutes or more after the first boat in that class finished will be scored "Time Limit Expired (TLE)"—the boat's score will be the number of competitors in the starting area plus one.